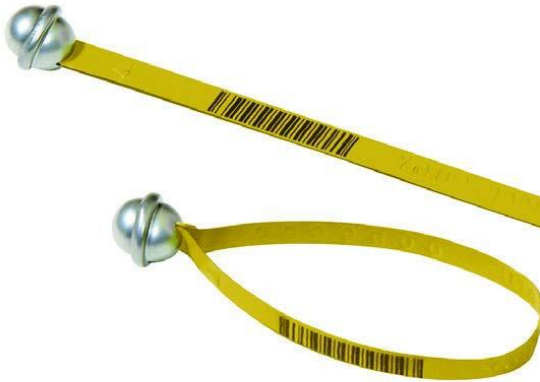


G2G Global Metal Seals (G-GMS)

G2G GLOBAL METAL SEAL



Global Metal seals are U.S. Customs approved and are used by many government agencies, industrial manufacturers, forwarding agents and international cargo handlers. The double wire locking mechanism encased within the Global seal secures your shipment and provides increased tamper resistance. Available unpainted or with painted heads and/or straps. **Barcoding options available.**

FEATURES

- ✦ Applied without the use of tools
- ✦ Company name and serial number embossed at no extra charge
- ✦ Painted finish available for added seal life & quick identification
- ✦ Stock seals are available for rush shipments
- ✦ Stock seals are embossed with the word "SECURED" and sequential numbering
- ✦ Recyclable
- ✦ Fits through extremely thin slots
- ✦ Cannot be disengaged by intrusion or manipulation and unlike plastic there is no risk of piercing with pins to interfere with the locking mechanism
- ✦ New & Improved head design for increased tamper resistance

APPLICATIONS

- ✦ Game/Fur Tags
- ✦ Ocean Containers
- ✦ Part ID Tags
- ✦ Railroad Freight & Tank Cars
- ✦ Sprinkler Systems
- ✦ Storage Bins
- ✦ Tractor Trailers
- ✦ Transfer Hoppers

PACKAGING

- ✦ 100 seals per wired bundle
- ✦ Up to 5000 per box
- ✦ Box dimensions: 18" X 11" X 22" (5M)
- ✦ Gross weight: 14 lbs per 1,000

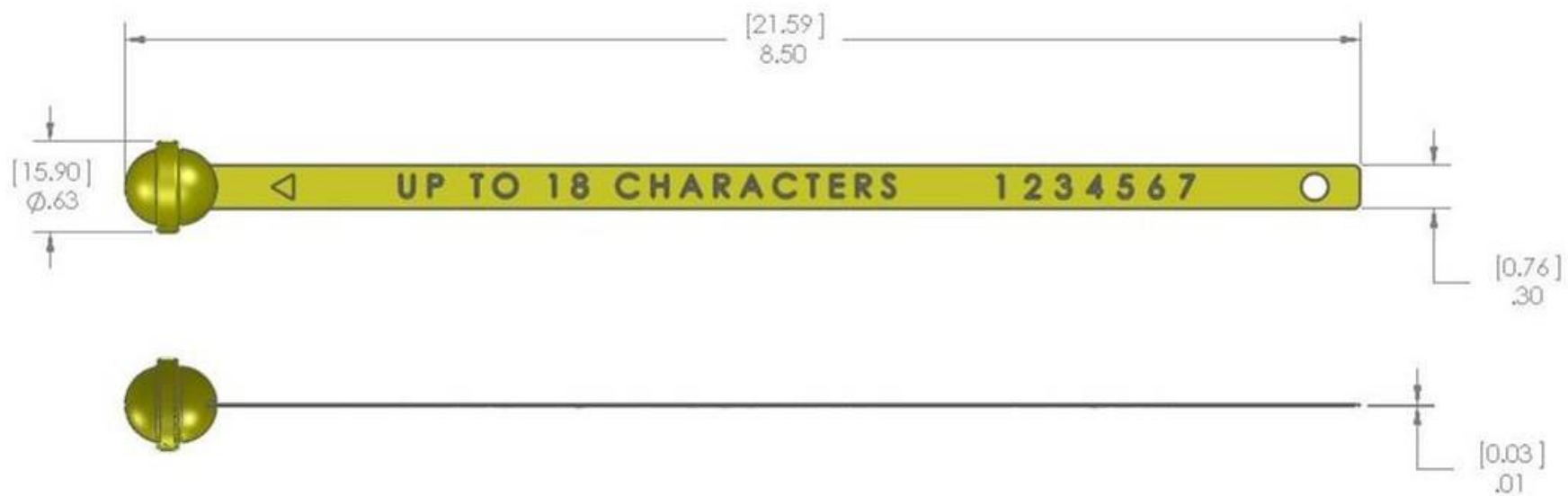
LOCKING INSTRUCTIONS

- ✦ Insert tail fully into head
- ✦ Then pull back on tail to check proper sealing
- ✦ Record seal number as required (carefully cut with metal shears to remove)

SPECIFICATIONS

- ✦ Made of tin plate steel 95#, finished dimension: 5/16" X 8 1/2"
- ✦ Operational strap length: 7 1/4"
- ✦ Breaking strength: average 155 lbs.
- ✦ Embossing up to 18 characters and/or a 7digit number sequence
- ✦ Company logos available (one-time fee applies)
- ✦ Painted finish for both head and strap is available
- ✦ Custom color or paint designs available
- ✦ **Barcoding options available**
- ✦ NSN#5340-00-081-3381





G2G Global Metal Seal