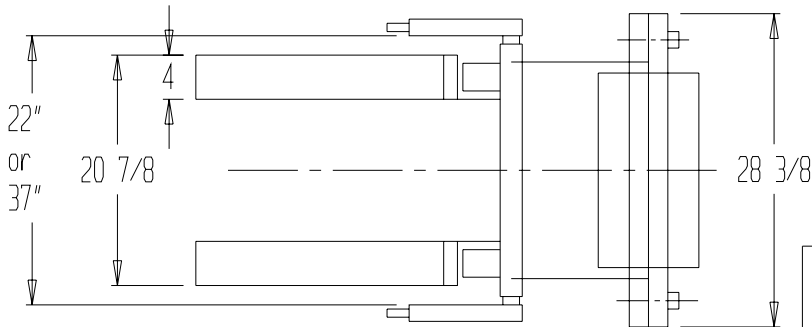
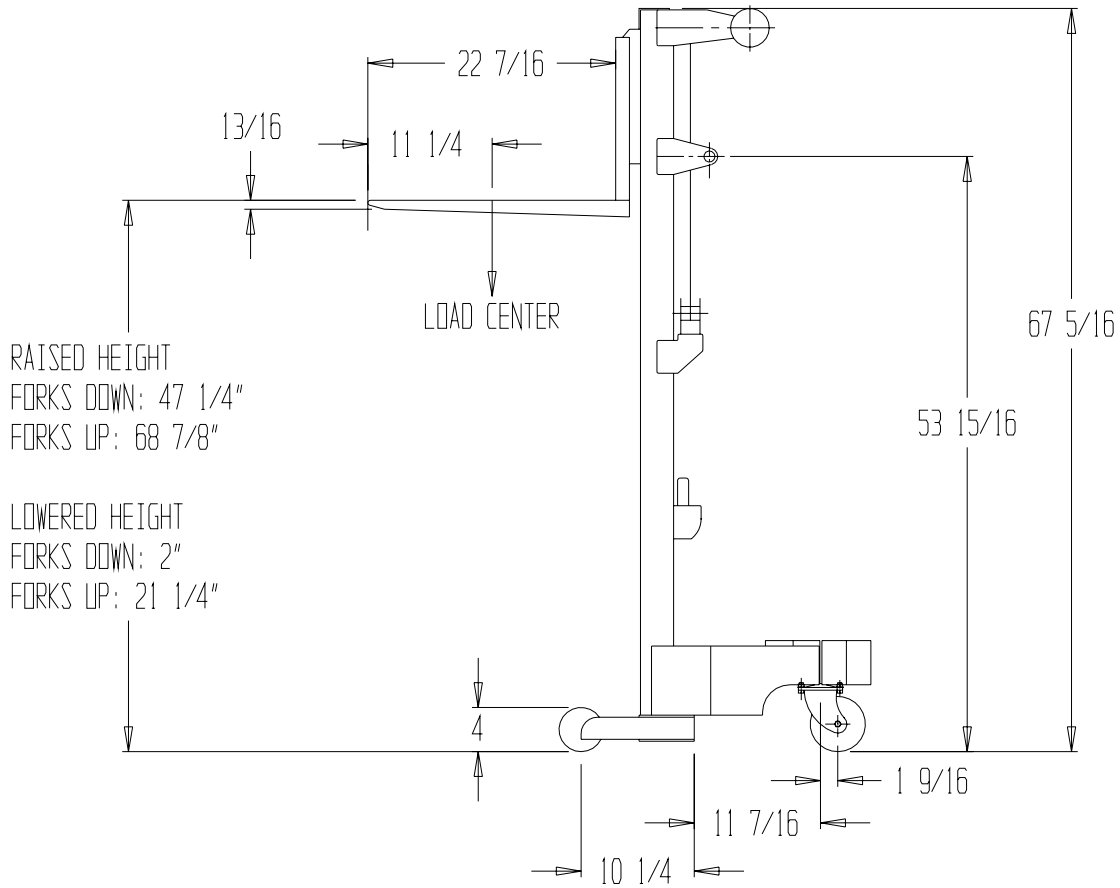


HAND WINCH LIFT TRUCK - A-LIFT-CB



STANDARD FEATURES

MODEL NUMBER: A-LIFT-CB
 DURABLE STEEL AND
 ALUMINUM CONSTRUCTION

CAPACITY: 500 LBS

LOWERED HEIGHT

FORKS DOWN: 2"

FORKS UP: 21 1/4"

RAISED HEIGHT

FORKS DOWN: 47 1/4"

FORKS UP: 68 7/8"

TWO Ø 5" REAR SWIVEL CASTERS

TWO Ø 4" FRONT WHEELS

RAISED HT = 47 COMPLETE REVOLUTION ON CRANK

BASE OD: 43 1/4" - 28 1/4"

BASE ID: 36 1/2" - 21 1/2"

PRODUCTION WILL START UPON
 RECEIPT OF SIGNED APPROVAL
 DRAWING

APPROVAL

I, the undersigned, hereby approve this print

[] As drawn [] As marked

This includes my approval of design & dimensions.

Signed: _____

Date: _____

SPECIAL FEATURES

NONE

**SPECIAL UNITS ARE NON-RETURNABLE

*AVAILABLE AT ADDITIONAL COSTS

DISTRIBUTOR'S NAME:		P.O.#:
VESTIL MANUFACTURING		W.O.#:
DRAWN BY: Q. WESTFALL	DATE: 3/21/07	SALES:
REFERENCE:	SCALE 1:18	DRWG./FILE NAME: 21-007-069