

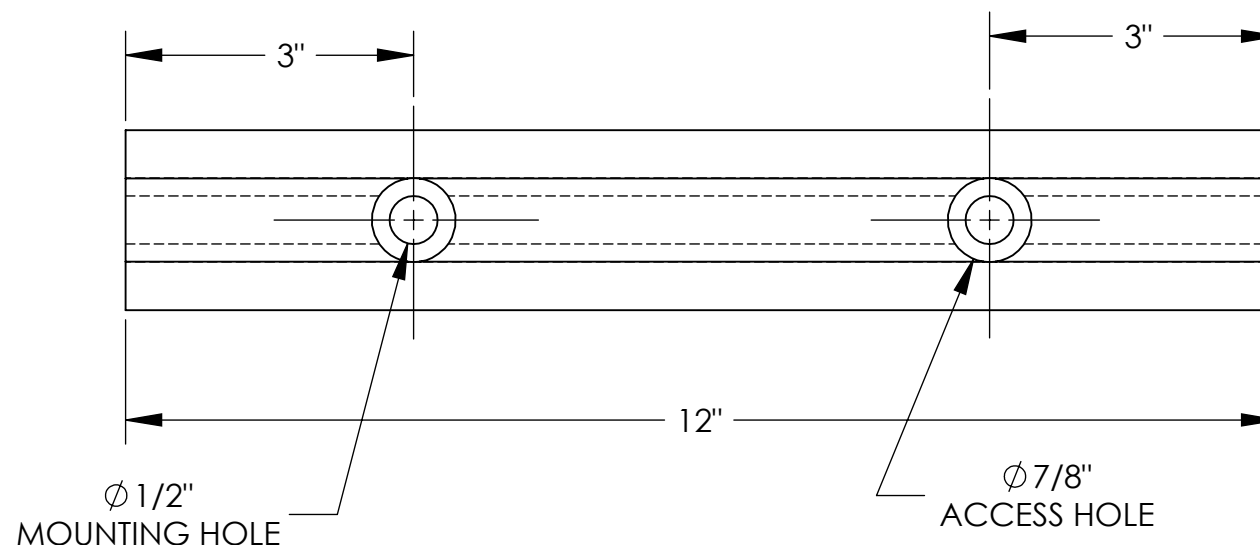
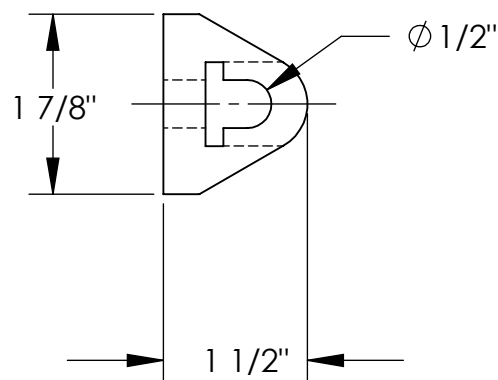
EXTRUDED RUBBER BUMPER - M-2-12

APPROX WEIGHT: 0.69 lbs.
DOES NOT INCLUDE WEIGHT OF POWER OR PACKAGING!!!

*** ANY ADDITIONS, DELETIONS, OR OMISSIONS MUST BE CORRECTED ON THIS DRAWING AS THIS DRAWING WILL BE CONSIDERED ALL INCLUSIVE ***

ALL GRAPHICS PROVIDED ARE FOR REFERENCE ONLY. IF CERTAIN DIMENSIONS ARE CRITICAL PLEASE VERIFY THOSE DIMENSIONS WITH YOUR SALESPERSON

DURO METER READING OF 70 +/- 5
TENSIL: 1850 PSI
ELONGATION: 220%
TEAR STRENGTH: 229 LBS
IMPACT RESISTANCE: 75%



DIMENSION TOLERANCE $\pm 3/4"$

STANDARD FEATURES

MODEL NUMBER IS: M-2-12
OVERALL WIDTH IS: 1 7/8"
OVERALL LENGTH IS: 12"
OVERALL PROJECTION IS: 1 1/2"
NUMBER OF MOUNTING HOLES: 2
MOUNTING HOLE SIZE: Ø 1/2"
ACCESS HOLE SIZE: Ø 7/8"

SPECIAL FEATURES

NONE

A P P R O V A L	I, THE UNDERSIGNED, AGREE THAT THE PRODUCT AS REPRESENTED SATISFIES DESIGN AND DIMENSION REQUIREMENTS. I ALSO ACKNOWLEDGE MY DUTY TO CONFIRM PRODUCT AND INSTALLATION COMPLIANCE WITH ALL APPLICABLE FEDERAL, STATE AND LOCAL REGULATIONS AND STANDARDS.	
	ANY MODIFIED UNITS ARE NON-RETURNABLE	
	[] As drawn [] As marked	
	Signed: _____ Date: _____	
Printed Name: _____		
LEAD TIME WILL START UPON RECEIPT OF SIGNED APPROVAL DRAWING		

FOR INTERNAL USE ONLY PROJECT SIGN OFF	
SALES	
ENG.	
FAB.	
POWER	

DISTRIBUTOR'S NAME:		P.O.#
VESTIL MANUFACTURING		X
W.O.#		
DRAWN BY: JWW		DATE: 04/25/2019
REFERENCE: X		SCALE: 1:2
QUOTED LEAD TIME: X		QUOTE #
		X
SALES: X		FILE NAME:
		29-007-098