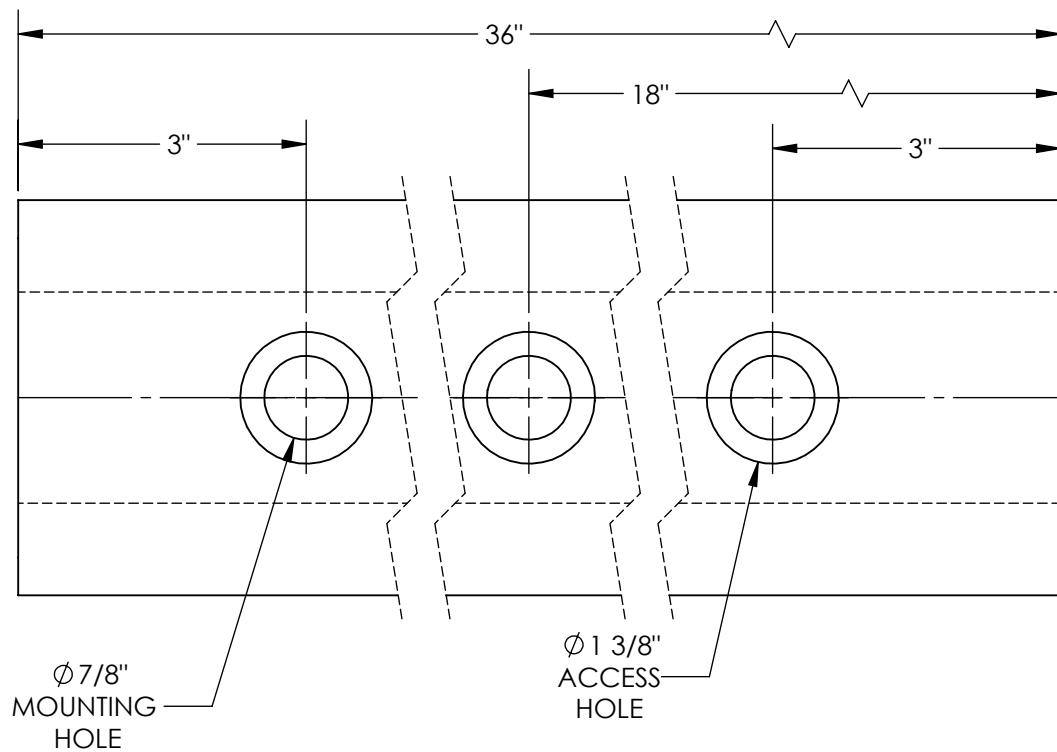
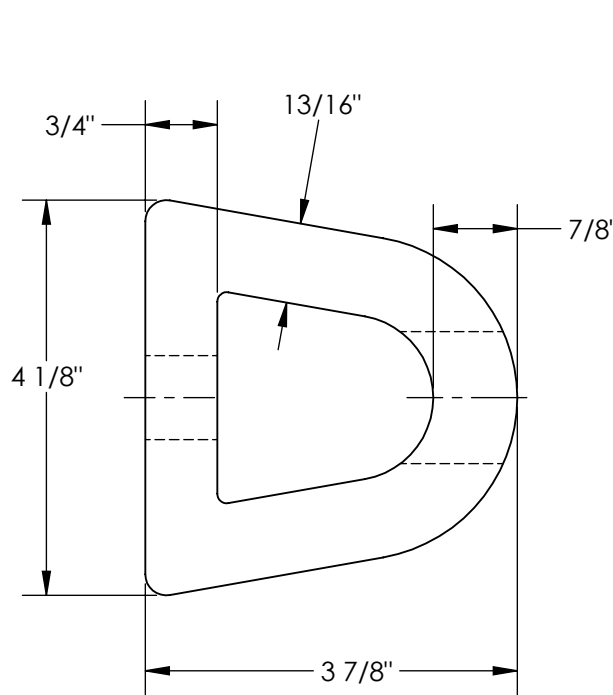


APPROX WEIGHT: 11.33 lbs.  
DOES NOT INCLUDE WEIGHT OF POWER OR PACKAGING!!!

EXTRUDED RUBBER BUMPER - M-4-36

\*\*\* ANY ADDITIONS, DELETIONS, OR OMISSIONS MUST BE CORRECTED ON THIS DRAWING AS THIS DRAWING WILL BE CONSIDERED ALL INCLUSIVE \*\*\*  
ALL GRAPHICS PROVIDED ARE FOR REFERENCE ONLY. IF CERTAIN DIMENSIONS ARE CRITICAL PLEASE VERIFY THOSE DIMENSIONS WITH YOUR SALESPERSON



STANDARD FEATURES

MODEL NUMBER IS M-4-36  
OVERALL WIDTH IS 4 1/8"  
OVERALL LENGTH IS 36"  
OVERALL HEIGHT IS 3 7/8"  
NUMBER OF MOUNTING HOLES 3  
MOUNTING HOLE SIZE Ø 7/8"  
ACCESS HOLE SIZE Ø 1 3/8"  
WEIGHT 17LBS.  
(3)-REINFORCEMENT PLATES INCLUDED  
SIZE: 1 5/8" x 6"

SPECIAL FEATURES

NONE

DIMENSION TOLERANCE ± 3/4"

APPROVAL	I, THE UNDERSIGNED, AGREE THAT THE PRODUCT AS REPRESENTED SATISFIES DESIGN AND DIMENSION REQUIREMENTS. I ALSO ACKNOWLEDGE MY DUTY TO CONFIRM PRODUCT AND INSTALLATION COMPLIANCE WITH ALL APPLICABLE FEDERAL, STATE AND LOCAL REGULATIONS AND STANDARDS.	
	<b>ANY MODIFIED UNITS ARE NON-RETURNABLE</b>	
	[ ] As drawn [ ] As marked	
	Signed: _____ Date: _____	
Printed Name: _____		
LEAD TIME WILL START UPON RECEIPT OF SIGNED APPROVAL DRAWING		

FOR INTERNAL USE ONLY PROJECT SIGN OFF	
SALES	
ENG.	
FAB.	
POWER	

DISTRIBUTOR'S NAME:		P.O.#
VESTIL MANUFACTURING		X
DRAWN BY: JWW		W.O.#
DATE: 04/25/19		X
REFERENCE: X	SCALE: 1:2	SALES: X
QUOTED LEAD TIME: X	QUOTE # X	FILE NAME:
		29-007-077