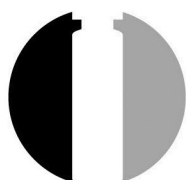


GLASS TYPE	GLASS COLOR	OPEN END FINISH	THREADS PER INCH	BOTTOM
Type 1 Borosilicate	Amber	15-425 Threaded	12	Flat



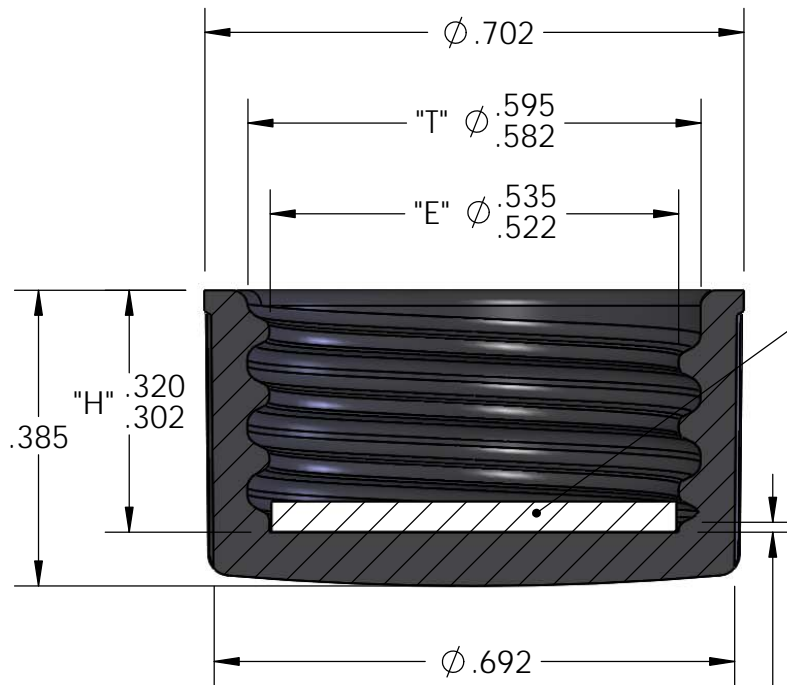
PacificVial
MANUFACTURING INC

323.721.7004
323.721.3364 FAX

ITEM #: VA151760GB

NOTES:

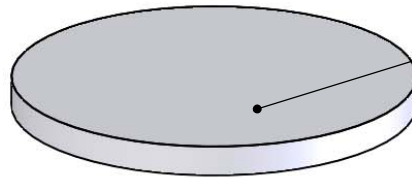
DRAWING #: VA151760GB-A-1



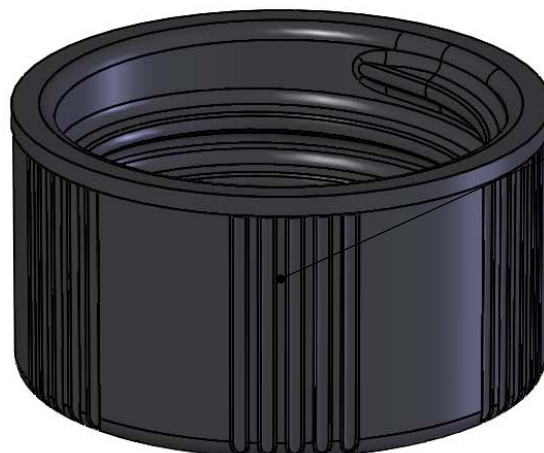
SECTION A-A

"C" .038 REF.

AVAILABLE LINERS	
.035P /	.002 PTFE
.035P /	AF
.035P /	AF / MR
.035P /	MR
.035P /	PEPL
.035P /	TF
.035P /	VC-VL
.035P /	VC-VL / WLF6
.040	PE
.040	TRI FOIL WP
.050	14-B RUBBER
.050	14-B / .005 PTFE
.050	LDPE FOAM / .005 PTFE
.050	LDPE FOAM-3
.050	LDPE FOAM-3 / .005 PTFE
.050	TRI FOIL WP
.050	TRIL FOIL WP / F-217 / LP
.050	LDPE FOAM / PTFE



SEE AVAILABLE LINERS



RS-15L-A 47115
15mm-425 FINISH-12 TPI
BLACK PHENOLIC &
GREEN OR WHITE UREA

PROPRIETARY AND CONFIDENTIAL

THE INFORMATION CONTAINED IN THIS DRAWING IS THE SOLE PROPERTY OF NATIONAL NOVELTY BRUSH CO. ANY REPRODUCTION IN PART OR AS A WHOLE WITHOUT THE WRITTEN PERMISSION OF NATIONAL NOVELTY BRUSH CO. IS PROHIBITED.

UNLESS OTHERWISE SPECIFIED:

DIMENSIONS ARE IN INCHES
TOLERANCES:
FRACTIONAL $\pm 1/16$ "
ANGULAR $\pm 2^\circ$
TWO PLACE DECIMAL $\pm .02$
THREE PLACE DECIMAL $\pm .010$

	NAME	DATE
DRAWN	SWC	11/30/2016
APPROVED	JME	12/12/2016

SCALE: 4:1

NATIONAL NOVELTY BRUSH Co
-DIV. MAUGUS MANUFACTURING-
LANCASTER, PA. ESTABLISHED 1916

NNBC ITEM #47115