

Packing Instructions

STP-210 Biological Substance, Category B Ambient Shipping System

Primary Receptacle (s) _____

Bubble wrap _____
(not included)

Absorbent (STP-151) _____

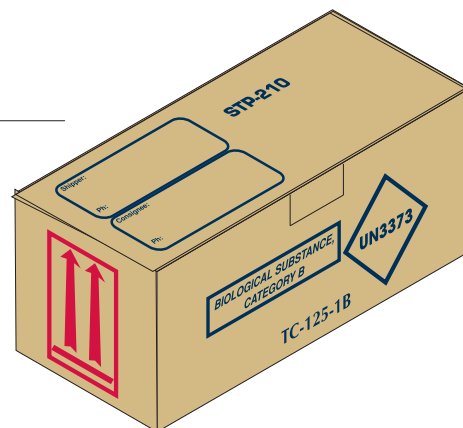
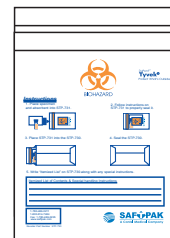
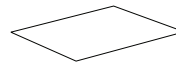
Leakproof Polybag _____
(STP-711)

When combined, equals
pressure tested
secondary (95 kPa).

Tyvek® Envelope _____
(STP-710)

**Itemized List of Contents and
Special Handling Instructions** _____

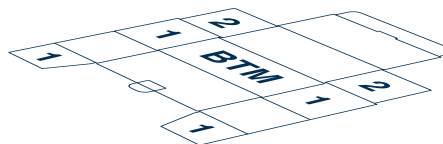
Fibreboard Box _____
(STP-210)



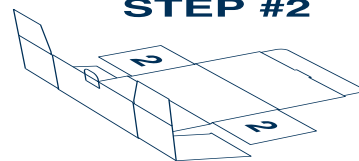
Packing Instructions

1. Ensure that all primary receptacle closures are held securely, tightly and effectively in place by secondary means.
2. Complete address for shipper and consignee.
3. Assemble box (see diagram).
4. Place primary receptacle(s) in the leakproof polybag portion of the patented Secondary Pressure Receptacle (STP-710) along with bubble wrap (not included) and absorbent material. Follow the directions on the polybag to seal the bag.

STEP #1



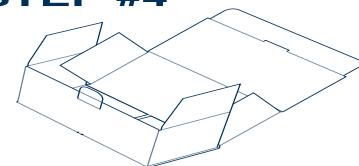
STEP #2



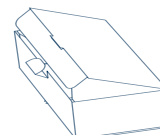
STEP #3



STEP #4



STEP #5



NOTE: Use an amount of absorbent material sufficient to absorb the entire volume of the primary receptacle(s). The absorbent material (STP-151) included in the system is 100 mL. Separate fragile primary receptacles using bubble wrap.

5. Complete an Itemized List of Contents directly on the STP-710 Tyvek® Envelope with an indelible pen.
6. Place the sealed polybag into the Tyvek® Envelope and seal according to the instructions on the Envelope.
7. Place the completed Secondary Pressure Receptacle into the STP-210 outer packaging.

NOTE: For primary receptacles with a volume greater than 50 mL, the closures of the primary receptacle(s) must be oriented with the orientation arrows on the outer packaging.

8. Fill any empty space in the package with packing material to keep the Secondary Pressure Receptacle from shifting. Close the fibreboard flaps and secure with packing tape.

Capacity and Payload Options



Specimen Containers

Maximum Capacity:

Three (3), 100 mL specimen containers.
Three specimen containers per STP-710.
One STP-710 required.



Test Tubes

Maximum Capacity:

Twenty (20), 10 mL tubes.
Ten tubes per STP-710.
Two STP-710s required.



Blood Bags

Maximum capacity:

Two (2), 500 mL blood bags.
One blood bag per STP-710.
Two STP-710s required.

NOTE: At maximum capacity there may not be sufficient room for bubble wrap to protect the specimen.

NOTE: The maximum payload capacity of the STP-210 is 1 kg or 1 L.